



Z:LEX Specifications * Specifications and appearance are subject to change without prior notice.

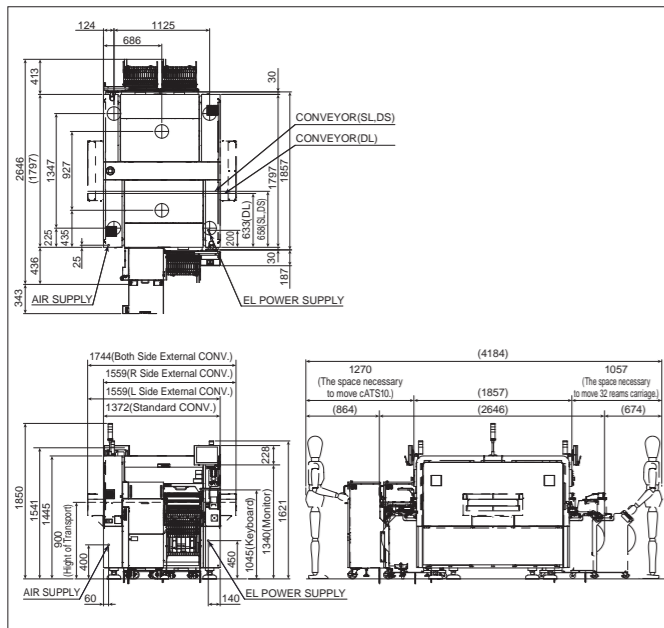
Model	YSM20	YSM20W
Applicable PCB	Dual stage (only for X axis 2-beam specs.) 1 PCB conveyance : L810 x W490 to L50 x W50 2 PCB conveyance : L380 x W490 to L50 x W50 Single lane L810 x W490 to L50 x W50 Dual lane (only for X axis 2-beam specs.) L810 x W230 to L50 x W50	Single lane L810 x W742 to L50 x W50 Dual lane (only for X axis 2-beam specs.) L810 x W356 to L50 x W50
Head / Applicable components	High-speed multi-purpose (HM: High-speed Multi) head x 2 : 03015 to 45 x 45mm L100mm, Height 15mm or less Note : Multi-camera (option) may be needed in some cases due to part height and part size. Odd-shaped components (FM: Flexible Multi) head : 03015 to 55 x 55mm L100mm, Height 28mm or less	
Mounting capability	X axis 2-beam : High-speed multi-purpose (HM: High-speed Multi) head x 2 90,000CPH (under optimum conditions as defined by Yamaha Motor)	X axis 2-beam : High-speed multi-purpose (HM: High-speed Multi) head x 2 80,000CPH (under optimum conditions as defined by Yamaha Motor)
Mounting accuracy (Under optimum conditions as defined by Yamaha Motor when standard evaluation materials are used)	±0.035mm (±0.025mm) Cpk ≥ 1.0 (3σ)	
Number of component Types	Fixed plate : Max.140 types (conversion for 8mm tape feeder) Feeder carriage exchange : Max.128 types (conversion for 8mm tape feeder) Trays for 30 types (fixed) and 10 types (carriage)	
Power supply	3-Phase AC 200/208/220/240/380/400/416V +/- 10% 50/60Hz	
Air supply source	0.45MPa or more, in clean, dry state	
External dimension (excluding projections)	L 1,374 x W 1,857 x H1,445mm	L 1,374 x W 2,110 x H1,445mm
Weight	Approx. 2,050 kg	Approx. 2,500 kg

SMT Innovation

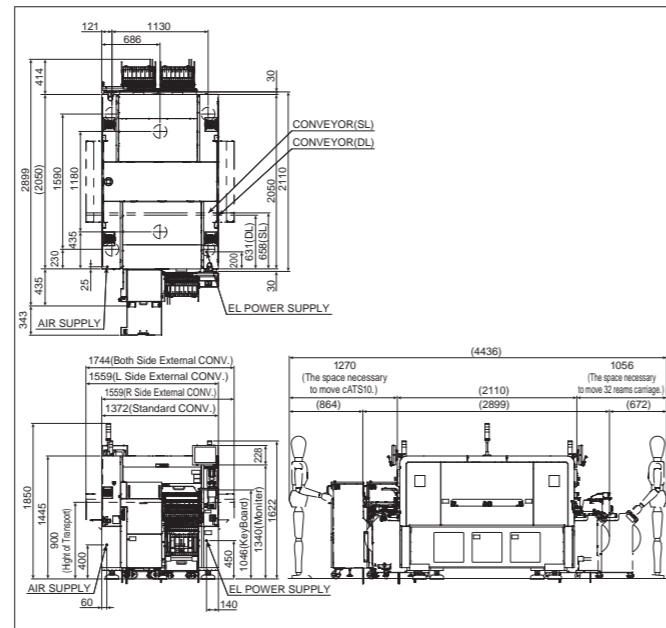
Z:LEX YSM20 / YSM20W

High-Efficiency Modular

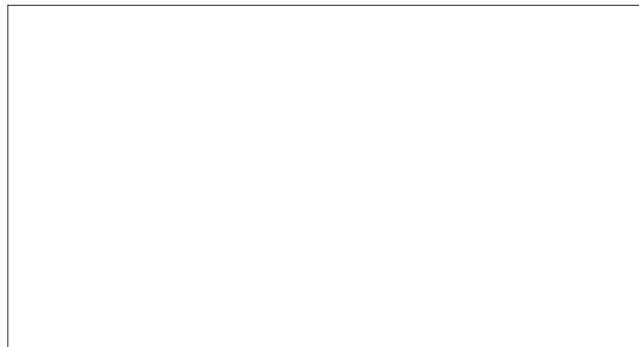
YSM20 External dimension



YSM20W External dimension



DISTRIBUTOR



IM Operations

882 Soude, Naka-ku, Hamamatsu, Shizuoka 435-0054, Japan
Telephone 81-53-460-6100 Facsimile 81-53-460-6145
URL <http://global.yamaha-motor.com/business/smt/>

YAMAHA MOTOR IM (SUZHOU) CO.,LTD.

Building 3C, Export Processing Zone A, No.200 Suhong Middle Road, Suzhou Industrial Park, Jiangsu, P.R. China
Telephone 86-512-6831-7091 Facsimile 86-512-6831-7093

YAMAHA MOTOR IM (SUZHOU) CO.,LTD. Shenzhen Branch

Room A 3/F Xinzhou Building South Xinzhou Road Futian District Shenzhen Guangdong P.R.C 518038
Telephone 86-755-2393-9910 Facsimile 86-755-2393-9974

IM Bangkok office

64 Moo1, Bangna-Trad Rd., Km.21, Tambol Srisa Jorlake Yai, Amphur Bangsachong, Samutprakam 10540, Thailand
Telephone 66-2740-8340 Facsimile 66-2740-0996

IM Hanoi office

G1 Tang Long Industrial Park, Dong Anh, Hanoi, Vietnam
Telephone 84-4-3951-6451 Facsimile 84-4-3951-6461

YIME (IM Germany office)

Yamaha Motor IM Europe GmbH
Hansemannstrasse 12, 41468 Neuss, Germany
Telephone 49-(0)2131-2013 (Ext 520) Facsimile 49-(0)2131-2013 (Ext 529)

YIMA (IM USA office)

Yamaha Motor IM America Inc.
1270 Chastain Road, Kennesaw, Georgia 30144 USA
Telephone 1-770-420-5825 Facsimile 1-770-420-6043

IM Tokyo office

IM Osaka office

IM Fukuoka office

● The models shown in the photographs in this catalog may differ slightly from the standard specifications.
● Specifications and appearance are subject to change without prior notice.

SMT Innovation

High-Efficiency Modular

Z:LEX YSM20 / YSM20W

Caters effectively to a wide range of production processes - it is also the world's fastest in its class

Note: Components mounting speed (CPH) for a surface mounter with the 2-beam, 2-head layout. Based on Yamaha survey as at May 2014.

The 1-head solution!
Needs no head replacement!
03015 to large-size components

Highest speed in its class worldwide!
90,000 CPH (under optimum conditions as defined by Yamaha Motor) (YSM20W only)

Handling large PCBs
L810 x W490mm (YSM20W only)

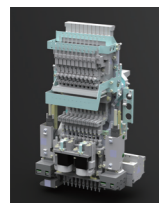
Maximum feeder count
140 types (under fixed specifications: conversion for 8mm tape feeder)



Feature 1 The "1 head solution" aims to deliver an ideal mounter that provides both high speed and versatility!

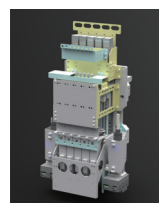
1 head solution

The two types of new heads are developed with the ideal of the "1 head solution" concept, which allows compatibility with a wide range of components at high speeds without the need for head replacement.



High-speed multi-purpose (HM: High-speed Multi) head

This universal type head made for high-speed mounting and versatility supports from ultra-tiny chips of 03015 (mm) to large-size components of 45 x 100 mm and height of 15 mm.



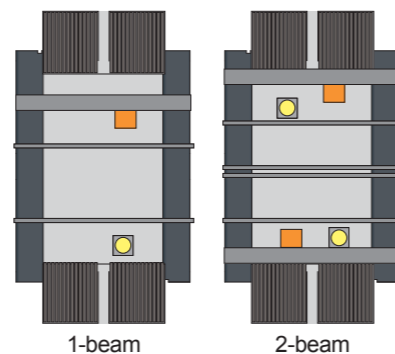
Odd-shaped components (FM: Flexible Multi) head

Super wide-ranging type head supports load control, and handles a broad spectrum of components from ultra-tiny chips of 03015 (mm), to ultra-large components of 55 x 100 mm and tall components of heights to 28 mm.

Beam variations available in 2 types

Ideal for setting up a flexible mounting line, and also having both good mounting performance and versatility, this offers a common platform selectable from 1 beam and 2 beams for an X axis configuration to match your budget.

Note: 1beam is only available on YSM20.

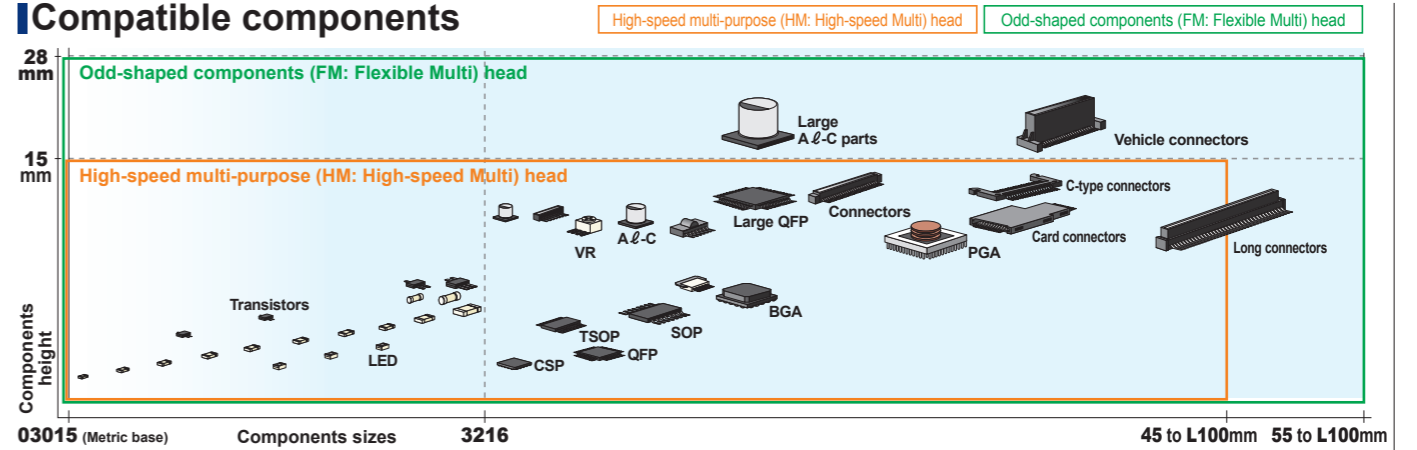


Superb mounting performance 90,000 CPH (under optimum conditions as defined by Yamaha Motor)

Besides incorporating a new-generation servo system employing high speed control technology, this mounter also has a newly designed Z-axis linear motor and tiny scan camera unit, as well as down-sized lightweight head with all sections revamped down to the small details to provide super mounting performance.

Feature 2 Wide support capability turns the concept of "Limitless EXpansion" into a reality!

Compatible components



Handling large PCB

YSM20

On YSM20, you can select the conveyor systems from dual-stage, dual-lane and single-lane. It supports large PCBs up to L810 x W490mm (dual-stage, single-lane conveying of single PCB) or L810 x W230mm (dual-lane).

YSM20W

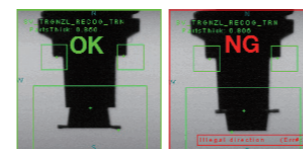
On YSM20W, you can select the conveyor systems from dual-lane and single-lane. The YSM20W drastically boosts the range of PCB coverage, conveying PCB sizes to a maximum of L810 x W742mm, payload up to 10kg, and PCB thicknesses up to 8mm (single lane).

	L=810	L=380 L=380	L=810	L=810
	Single lane	Dual stage (2 PCB conveyance)	Dual lane conveyance of 2 boards with identical widths	Dual lane Conveys 2 boards of different widths
YSM20	W=490 [Supports dual-stage single PCB transport]	W=490	W=230	W=410
YSM20W	W=742 [Conveys heavy objects to a maximum of 10kg]		W=356	W=662

Feature 3 Numerous functions to support high-quality mounting are included as standard features.

Side view function

Detects pickup status and component's presence with no downtime loss.



Blow station

Automatic blow cleaning function keeps nozzle clean for long periods.



High-speed smart recognition

Highly robust "High-speed Smart Recognition" that also creates recognition data for custom or unique components in a short time is now standard equipment.



Feature 4 Feeders and supply devices offering a high degree of freedom

Feeder carriage exchange

External setup-changeover feeder: one-step replacement carriage



Components providing device

Auto replacement 30 stage fixed type tray feeder "sATS30" and 10stage carriage tray feeder "cATS10" which is replaceable with feeder carriage are also available.



ZS feeder

Also supports thin, light-weight, compact, single lane type motorized intelligent feeders. Customer can select from non-stop feeder replacement function specs. Specs also support conventional SS feeders.

